

Cherry Eye



WHAT IS CHERRY EYE?

Cherry eye is prolapse of the **nictitating gland** in dogs (very rare in cats) of the **third eyelid**. It generally affects dogs under 2 years of age. It is most common in: **Cavalier King Charles Spaniels, English Bulldogs, Lhasa Apsos, Shih Tzus, West Highland White Terriers, Pugs, Bloodhounds, American Cocker Spaniels, and Boston Terriers.**

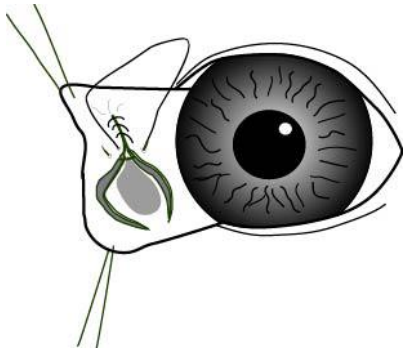
The **nictitating gland** is responsible for producing part of the tear film that lubricates the eye.

If left untreated and irritate the eye and can lead to complications such as conjunctivitis, corneal ulceration and dry-eye (KCS).

TREATMENT

In puppies, cherry eyes can be monitored and gently massaged or replaced -this may result in resolution as the puppy grows.

If the cherry eye continues to be present, **surgical correction** is required.



Surgery of cherry eyes involves **replacing the gland** within the third eyelid and is a relatively simple procedure.

Aftercare of cherry eye surgery involved keeping the eye moist and preventing secondary infection with ointment/drops.

Recurrence after surgery is possible but not common.

